



BC Employment Services **Priorities**

Karen Blackman, ADM

June 7, 2024



WorkBC Employment Services

The largest employment services network in the province with 102 locations.

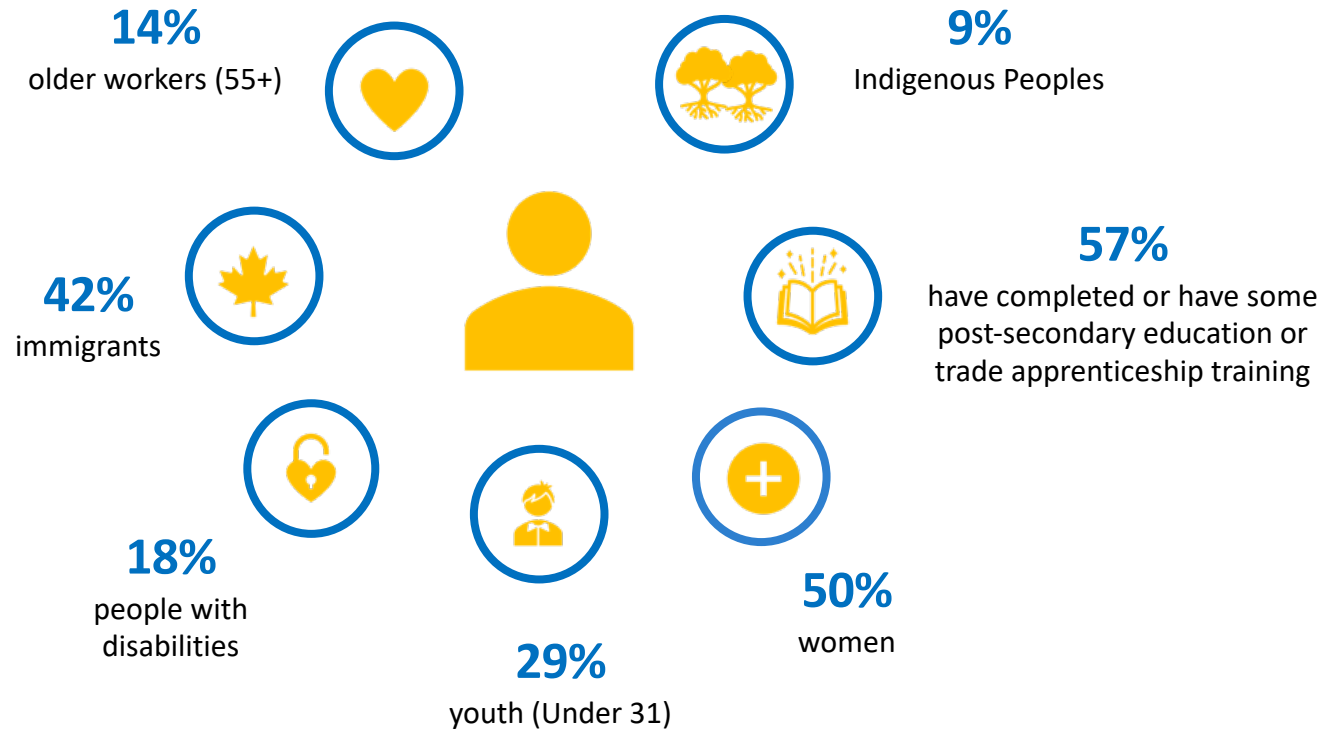
Helping job seekers improve their skills and connect with jobs.

Working with employers to find the right people, fill jobs and grow their businesses.



Who We Serve

94,000 clients served in 2023/24



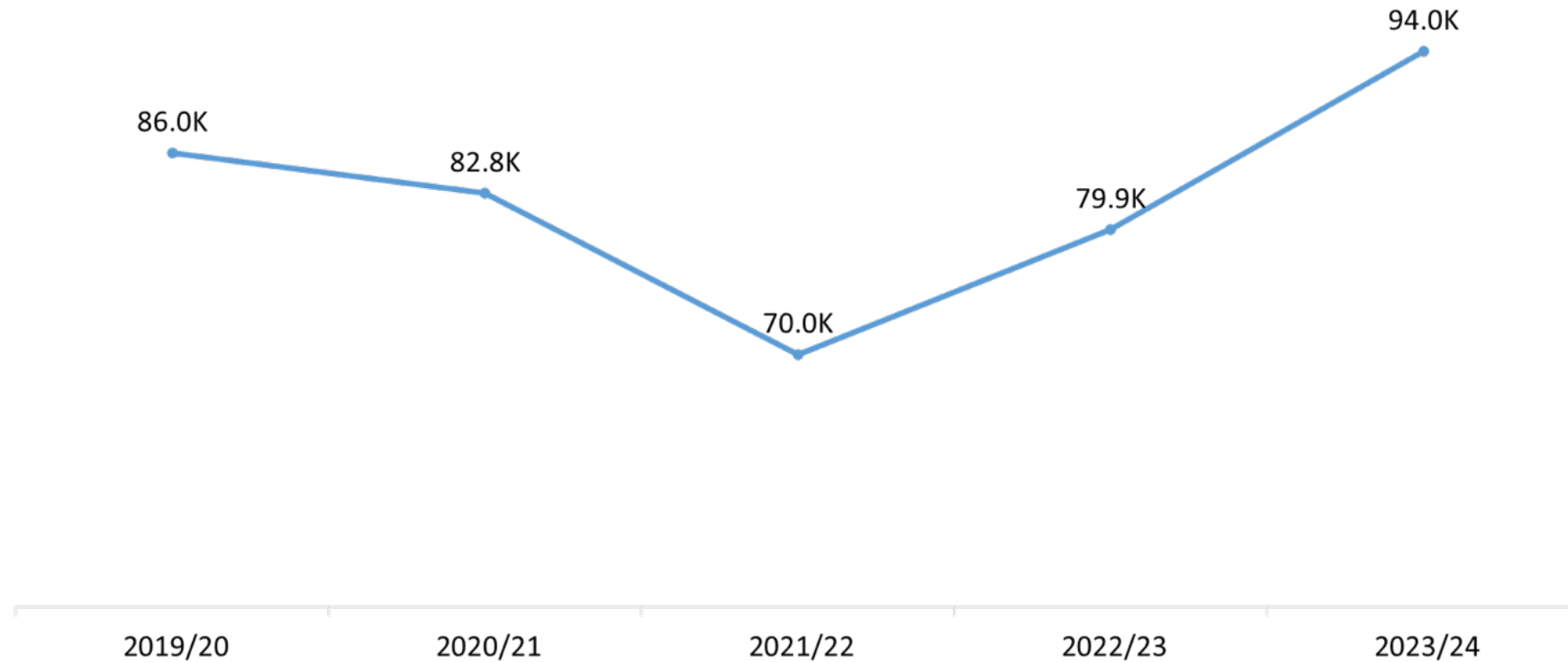
Changing Demographics

B.C.'s high employment rate sees highly employable people gainfully employed, while more people coming to WorkBC need extra support:

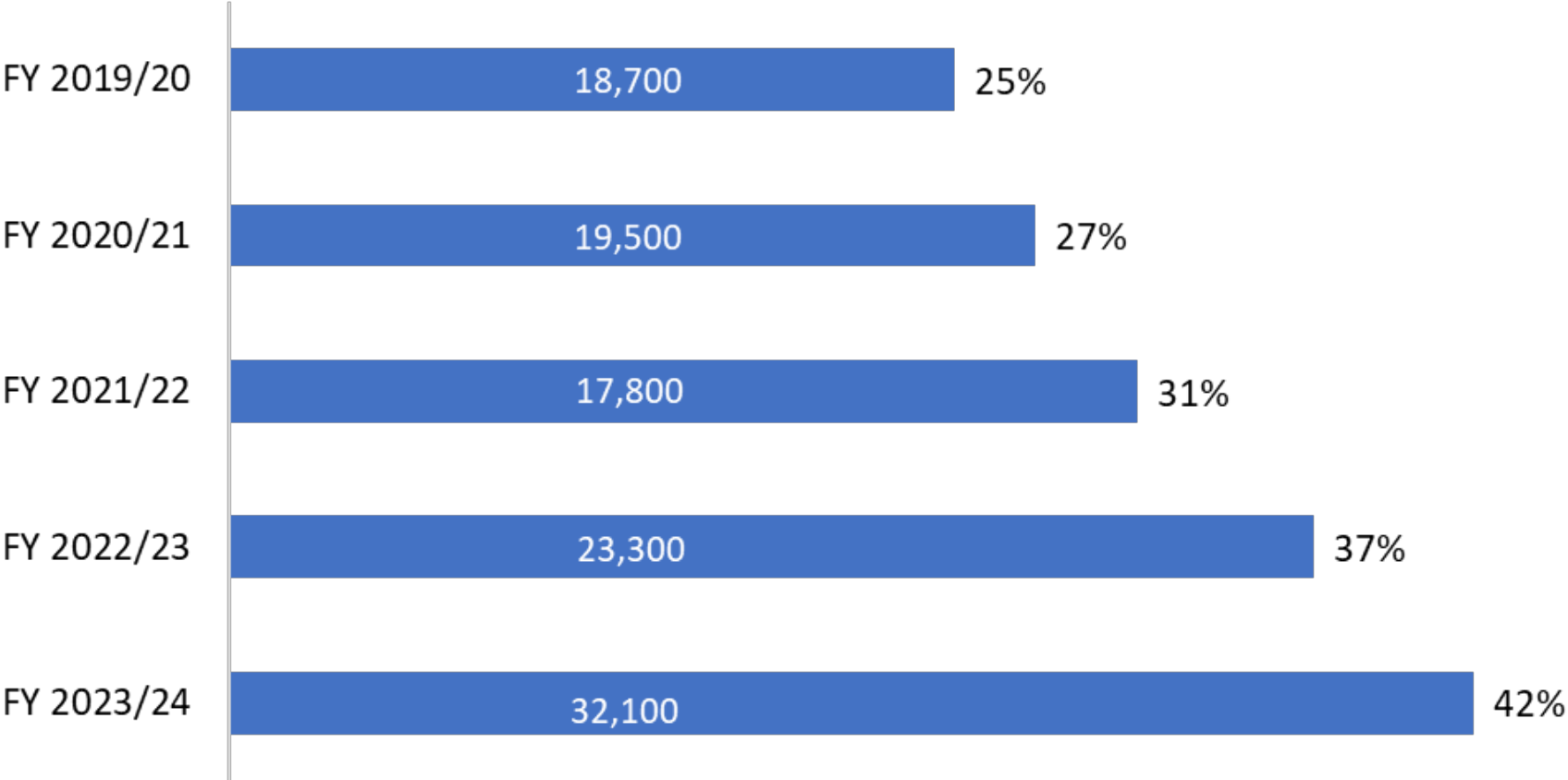
- Mental health challenges
- Addiction
- Homeless
- Language barriers



Provincial Caseload



Immigrant Clients



Support for People on Provincial Assistance

Expanded eligibility and supports ensure more people can prepare for, find and keep a good job:

- Financial supports available while in training to help cover living, childcare and transportation costs.
- Additional supports when starting a new job may include transportation, essential work clothing, supplies and tools, and personal grooming.
- On-the-job support available, including job coaching.
- People receiving income or disability assistance can stay on assistance while receiving WorkBC skills training and financial help.
- Refugee claimants now able to access WorkBC services.

Skills Training

To support people to upgrade skills to become job ready:

- A high school diploma or adult high school diploma
 - Academic upgrading
 - Health and safety certification, like First Aid and Food Safe
 - Trades certification, like forklift operator or traffic control
 - Basic certificate courses, like Microsoft Office
 - A diploma, like Health Care Assistant or Early Childhood Educator
-
- Up to 2 years of skills training support which includes financial help for tuition, living supports, transportation costs, childcare and more.



Single Parent Employment Initiative

Single parents on income and disability assistance can access up to 2 years of skills training and supports, including:

- paid childcare and healthcare during training
- paid childcare during first year of employment
- paid work experience
- financial support for tuition, books, supplies and transportation costs

Community and Employer Partnerships (CEP)

Community and Employer Partnerships funds training and work experience projects in communities across B.C.

Responding to local labour market issues, including Care Economy sector, transportation, service industry, and environment.

- **Job creation**
- **Positive social impacts**
- **Economic growth**

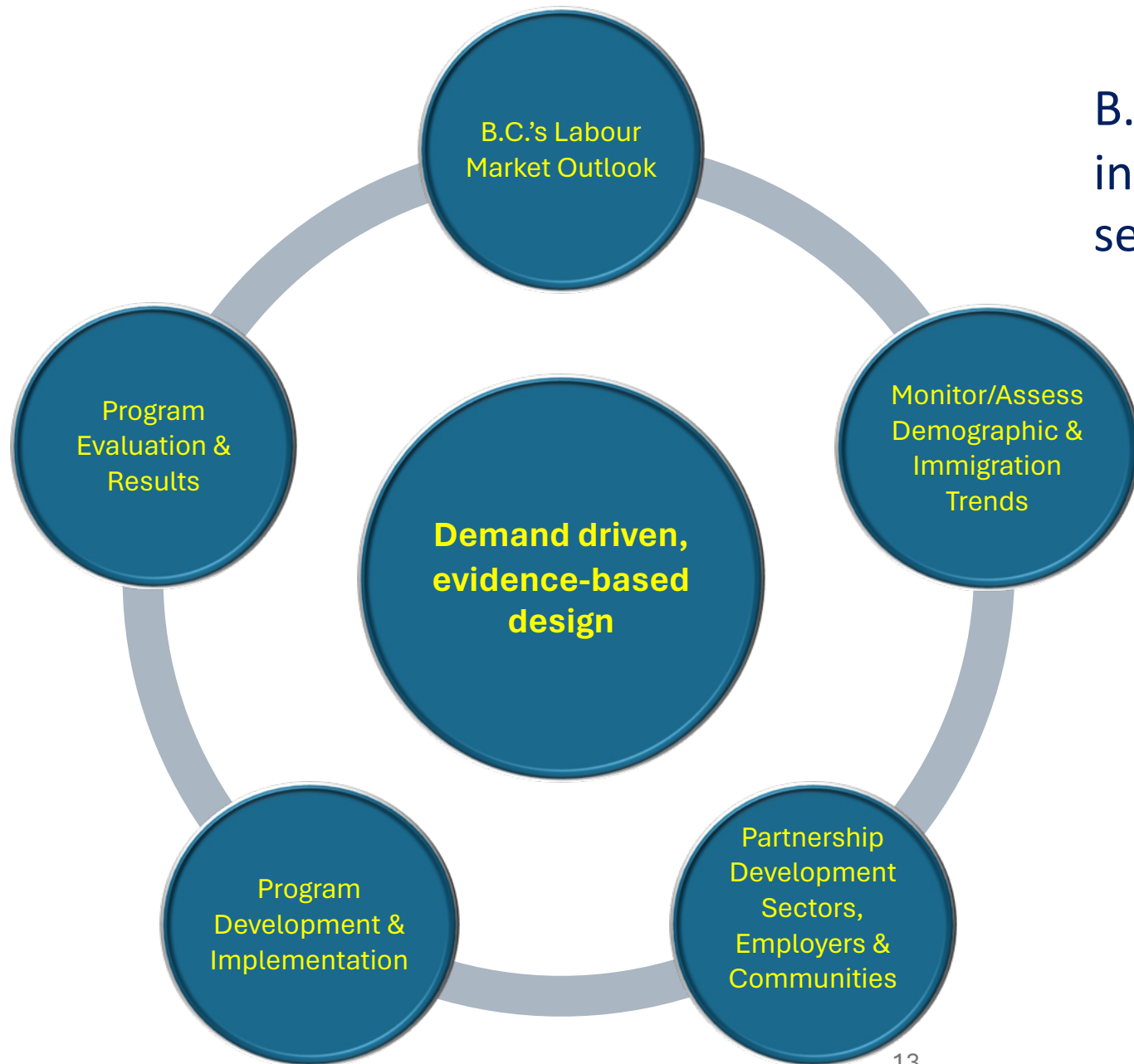


Demand-Led Innovation and Strategies

Supporting People, Employers, Sectors, and Communities



Targeting Investments



B.C. is targeting investments in innovative strategies across in-demand sectors :

- Construction/Skilled Trades
- Care Economy
- Clean Economy

Construction & Skilled Trades

- 66,600 job openings expected in the construction industry between 2023 – 2033 in B.C.
- B.C.'s Homes for People Plan – B.C. identifies construction workforce expansion and innovation as a key action
- Last year, we invested over \$8 million in 13 innovative cohort-based construction & skilled trades projects, supporting skills training for people across B.C. for in-demand construction and skilled trades jobs. These include:
 - Millwrights and welders
 - Electrical, plumbing and carpentry
 - Heavy equipment operators / professional drivers
 - Construction trades skills and more



HOMES FOR PEOPLE
An action plan to meet the challenges of today and deliver more homes for people, faster

Construction Cohort-Based Project Highlights

Kinghaven Peardonville House Society:

- ❖ \$815K to deliver general construction training to male survivors of violence including essential employment & technical skills training, work experience, support & trauma counselling

Indigenous Community for Leadership & Development Inc. (ICLD) Key to Employment:

- ❖ \$1.2M to provide occupational and employability skills training and work experience opportunities for Indigenous peoples to prepare for employment in the construction industry.



Care Economy

- 166,000 job openings in health, education and social sector forecast over the coming decade in B.C.
- B.C. has implemented provincial recruitment and retention strategies for ECE, Health and Human Resources Plan and the Care Economy
- Since last year, our ministry has invested almost \$9 million in 16 Care and Social Economy skills training projects. These projects are training people as:
 - Community social service workers, mental health and settlement workers, dental assistants, health care assistants, early childhood education & teacher assistants and more.
- That follows about \$65 million invested in research and innovation grants in the social sector and care economy.



Care Economy Actions



Foundry Youth Peer Support

\$16.2M grant to the Foundry for youth peer support services, supporting youth to help other youth and train for jobs in the health and social services sectors

Early Childhood Education Training and Employment Program for Immigrant Women - YWCA Metro Vancouver

\$1.2M to provide immigrant women participants with the skills they need to build meaningful careers that benefit their communities

Last year, we've invested over \$2 million for Clean Economy skills training projects that include:

The Mustard Seed Street Church Regenerative Agriculture Project

\$125K to provide work experience and skill enhancement in general farm practices, composting skills, regenerative agriculture, and food security techniques

Malahat First Nation Solar Earth Project

\$247K to implement a new solar technology called Solar Earth, to reduce energy costs and carbon footprint providing safety certifications, work placements and supporting in-community hiring to complete the installation of the system, and for future projects

Questions?

